



**LENECO**  
ENVIRONMENTAL MANAGEMENT

## Overview

Leneco was established in 2020 to provide environmental services in three core areas:

- **L**andscape management
- **E**nvironmental Management
- **E**cology.

Leneco draws on its project delivery experience to work closely with clients to provide practical, timely and cost efficient services.

We are Sydney based and undertake projects across NSW.



# Our Services

## Ecological Services

- Project Ecologist for infrastructure construction projects
- Biodiversity Development Assessment Reports (BDARs)
- Biodiversity Assessment Reports (for Part 5 assessments)
- Ecological surveys and monitoring

## Environmental Management

- Construction Environmental Management Plans (CEMPs)
- Erosion and Sediment Control Plans
- Infrastructure Tender Support
- GIS Mapping



# Ecological Services

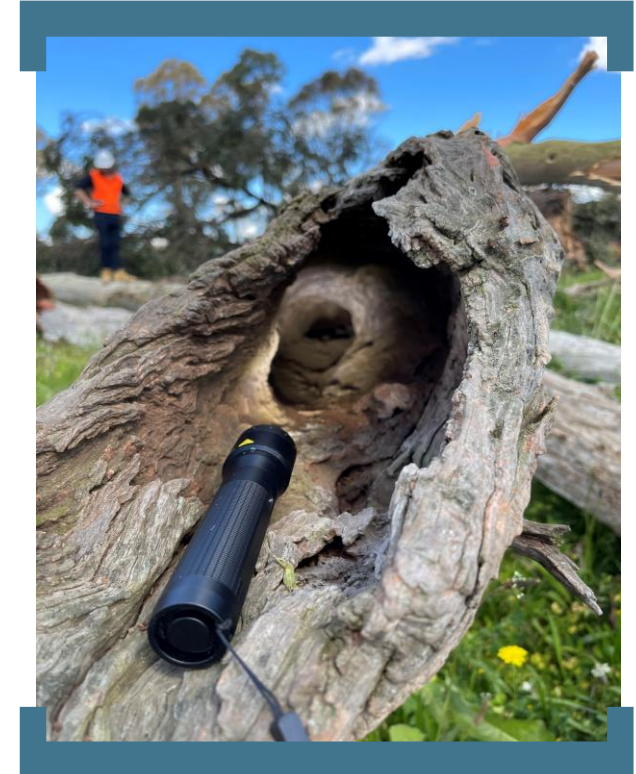
## Project Ecologists

Leneco have been engaged as the Project Ecologist on the following projects:

- M12 Motorway Central Package, Seymour Whyte
- M12 Motorway East Package / M7 Widening, John Holland Group
- Sydney Metro Western Sydney Airport On-airport works , Sydney Metro
- Pacific Highway Upgrade, Frederick to Eungai, CPB Contractors.

Our Project Ecologist's services include:

- Design Review (e.g. fauna crossings and fencing)
- Pre-clearing surveys, clearing supervision and fauna rescue
- Dam dewatering and fish relocation
- Nest boxes and hollow replacements
- Ecological monitoring programs.



# Ecological Services



## Biodiversity Development Assessment Reports

Leneco are Accredited Biodiversity Assessment Method (BAM) Assessors under the *Biodiversity Conservation Act 2016*. We can advise on the entry to the Biodiversity Offsets Scheme (BOS) and a staged approach to assessment and surveys to minimise cost and program risks.

Our BDAR projects include:

- Woy Woy Waste Management Facility for Central Coast Council delivered in partnership with Treehouse Ecology, Fraser Ecological and WiZarDTech Spatial Services
- BDARs for Environmental Resources Management (ERM) including two wind farms, a solar farm and BESS and an industrial development (details subject to confidentiality agreements).

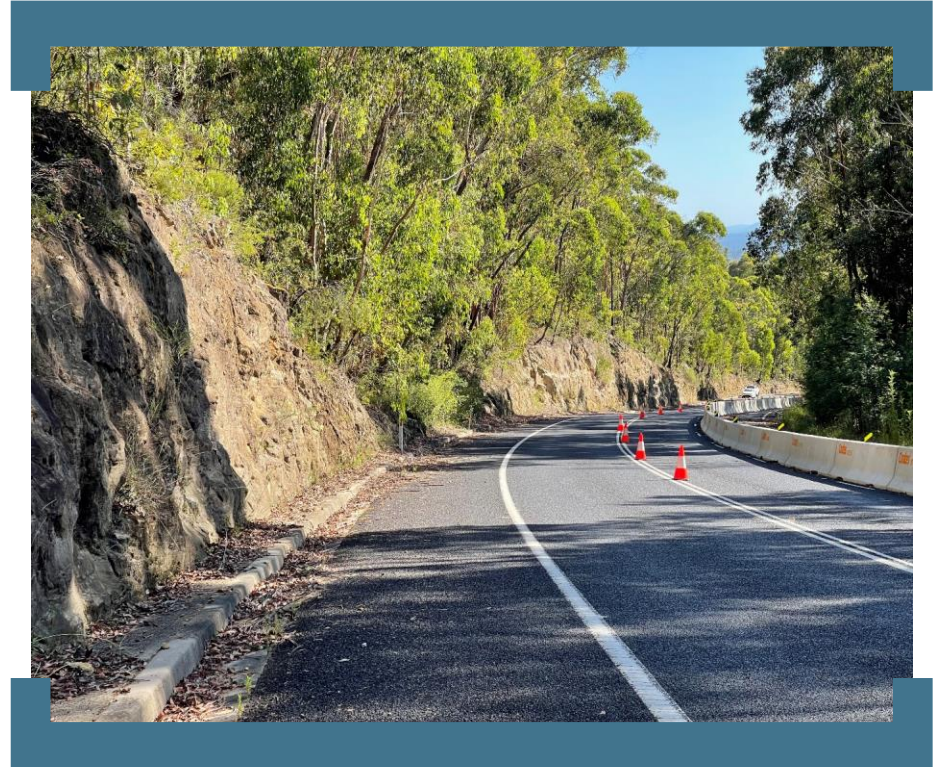


# Ecological Services

## Biodiversity Assessment Reports

Not all project assessments will trigger the BOS or require a BDAR. Leneco can prepare Biodiversity Assessments for Review of Environmental Factors (REFs) under Part 5 of the EP&A Act.

Leneco prepared Biodiversity Assessment Reports for the Ventia Ward Civil Joint Venture for the NSW Sydney Road Asset Performance Contract (SRAPC) parkland works for Transport for NSW.



# Ecological Services



## Ecological surveys and monitoring

Leneco undertake various ecological surveys and monitoring projects to comply with post approval conditions and to support strategic planning.

For example, Leneco is currently engaged by the NSW Department of Planning and Environment (DPE) to undertake field verification surveys to validate the published Plant Community Types (PCTs) in the State Vegetation Type Map (SVTM) published in June 2022. The project will involve rapid vegetation surveys at 200 points to identify the PCT.



# Environmental Management

## Management Plans

Leneco specialise in the preparation of Construction Environmental and Management Plans (CEMPs) and Sustainability Management Plans.

Examples of our Management Plans include:

- M12 Motorway Central Package CEMP, Seymour Whyte for TfNSW (2022)
- Sydney Metro, Western Sydney Airport on-airport works, Sydney Metro (2021)
- Jackson Place Remediation Soil and Water Management Subplan, Ward Civil (2022)
- Sydney Metro St Marys SSTOM Project Office (SPO) Site Establishment Management Plan
- Western Sydney Airport Landside Civil and Buildings Sustainability Management Plan.



# Environmental Management



## Erosion and Sediment Control

Leneco Director Peter Monsted is a Certified Professional in Erosion and Sediment Control (CPESC). As an Environmental Manager, Peter was responsible for erosion and sediment controls, EPL compliance, and construction water and basin management on major earthworks projects including:

- Sydney Metro, North West Rail Link
- WestConnex Stage 1a - M4 Widening, Homebush to Parramatta
- Pacific Highway Upgrade, Frederickton to Eungai
- Regional Rail Link (Victoria), Package E
- Victorian Desalination Project, Transfer Pipeline and Power Supply.



# Environmental Management

## Tender Support

Leneco have provided a range of environment and sustainability tender support services including requirements management (RVTM), design review, returnable schedule writing, cost estimates, technical specialist management, consistency reviews and alliance / JV client workshops.

We have contributed to the following tender responses:

- M12 Motorway Central Package, Seymour Whyte
- Sydney Metro WSA SCAW Package, CPB
- Sydney Metro WSA SBT Package, John Holland Gamunda JV
- WSA, Landside Civil and Buildings, Seymour Whyte BMD JV (AeroWest)
- Western Harbour Tunnel, CPB John Holland UGL JV
- Wyangala Dungowan Program Alliance, Seymour Whyte
- Waringah Freeway Upgrade, John Holland Seymour Whyte JV.



# Environmental Management

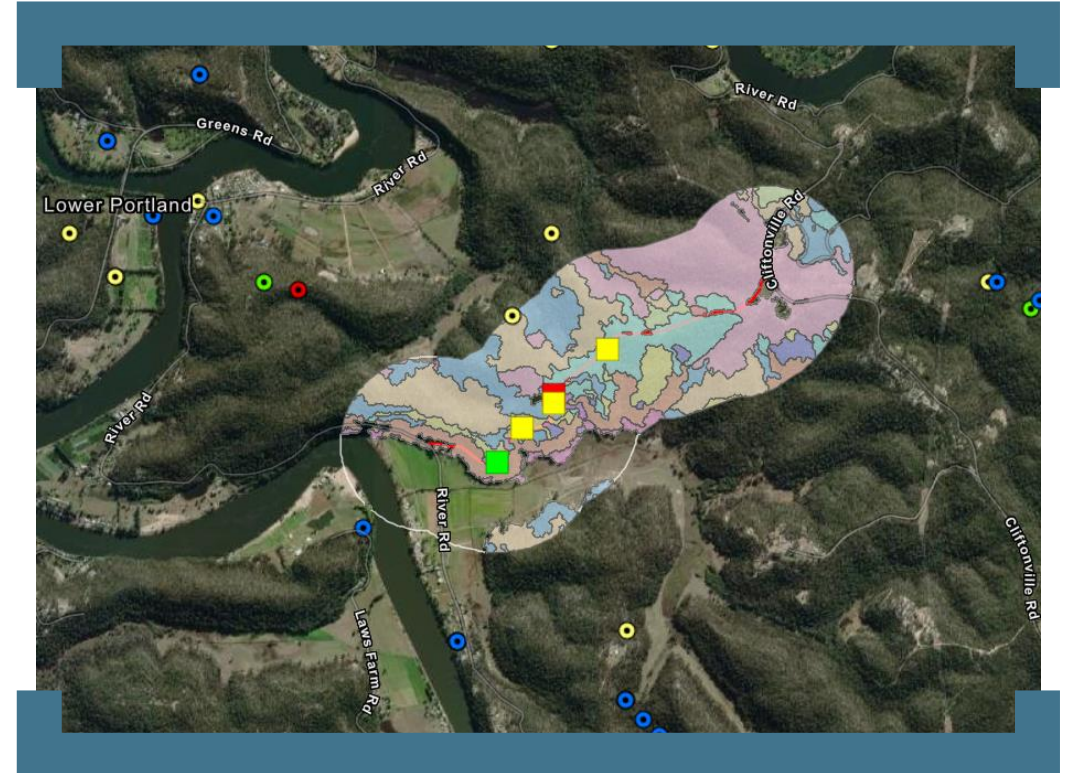
## GIS Mapping

All of our ecological and environmental management projects rely on our GIS capabilities.

Leneco use ESRI ArcGIS applications to collect, analyse and illustrate spatial data.

Our GIS services include:

- Creating Field Apps for field access to base data and collection of spatial data
- Creating Web Apps to share project data with teams
- Development of plans and maps for reports and management plans.



# About Us

## Peter Monsted, Director

Leneco was established in 2020 by Peter Monsted. Peter is a passionate botanist and ecologist with over 22 years of professional experience including ecological restoration (bush regeneration), consulting and infrastructure environmental management.

Prior to forming Leneco, Peter was an Environmental and Sustainability Manager with CPB Contractors on projects including Parramatta Light Rail, Sydney Metro NWRL, Pacific Highway Upgrade and the Victorian Desalination Project.

Peter's vision for Leneco is to develop an environmental services business that draws on his experience with a focus on services in the following areas:

- **L**andscape Management
- **E**nvironmental Management
- **E**cology.

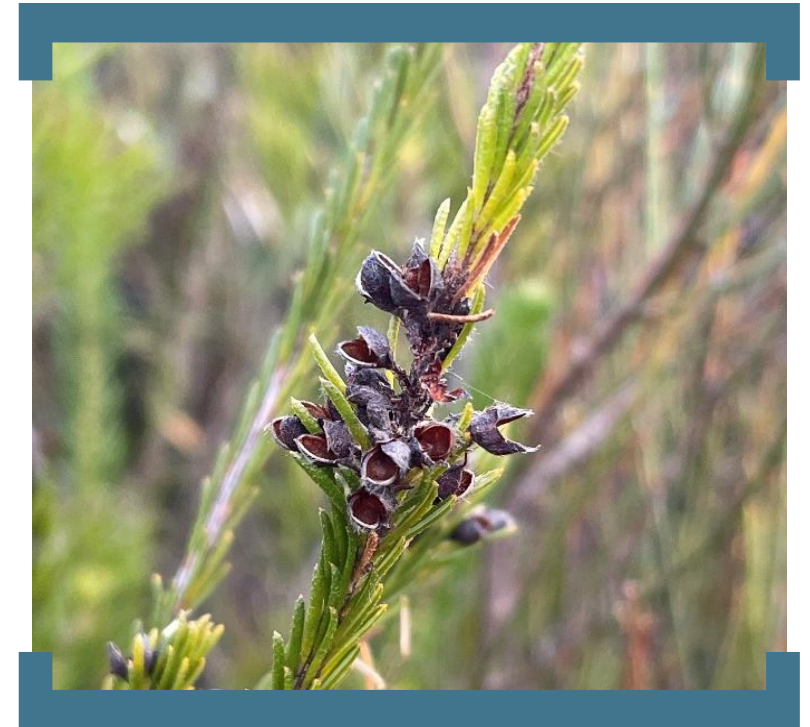


# About Us

## Technical Specialists

Leneco maintains close working relationships with a range of technical specialists to support delivery of projects, including:

- Botanists and zoologists
- Environmental Planners
- Heritage Consultants
- Acoustic Consultants
- Contaminated Land Specialists
- Erosion and Sediment Control Specialists.



# About Us

## Accreditations

- NSW Government Prequalification Scheme for Consultants in Construction (SCM1191) for Environmental Studies
- Accredited Biodiversity Assessment Method (BAM) Assessor
- Certified Professional in Erosion and Sediment Control (CPESC)
- Scientific Licence SL102553 and NSW Animal Ethics Authority (Animal Ethics Committee)
- Infrastructure Sustainability Council Accredited Professional

## Insurances

- Public and Products Liability
- Professional Indemnity
- Workers Compensation (785500 Business Management Services).





**LENECO**  
ENVIRONMENTAL MANAGEMENT

**Contacts:**

Peter Monsted – Director

Phone: 0437 685 224

Email: [Peter@leneco.au](mailto:Peter@leneco.au)